

comForte-ably Modernizing Legacy Proven NonStop Applications

‘Tandem’ Application Evolution & Modernization - From the Ground-Up and from the User-In



Harry Scott
Carr Scott Software Inc.

www.comForte.com



DISCLAIMER:

1) Technical advice from a sales guy – buyer beware!
Please invite us to discuss your specific situations.

2) HP's plans/directions shared are my perspective.
Invite HP to present the "official story" to your team

4) I love Tandem Computers!

Translation:

All information is biased – now you know mine!

The CIO dilemma...

“Should we keep our current applications and modernize what we can, or move the functionality to another platform?”

CIO – March 2015

“A stable platform with proven and tested processes is extremely appealing!”

“If it isn't broken, why fix it?”

“Our users don't like change!” – *even though the market and business demands it*

Modernize or replace legacy ~~legacy~~ proven apps....Should we stay or should we go?

You should modernize if you can answer YES to:

1. Is the app/system still serving the business?
2. Are the necessary skills (people) available?
3. Are the vendors still providing support?



Only three ways to update an application...

	CASE 1: NEW DEVELOPMENT	CASE 2: PACKAGE	CASE 3: MODERNIZATION
User Involvement	Hard	Hard	N/A
Executive Support	Hard	Hard	N/A
Clear Business Objectives	Hard	Hard	Easy
Optimization	Hard	Hard	Easy
Emotional Maturity	Hard	Hard	N/A
Size	Large	Medium	Small
Complexity	Complex	Complex	Simple
Time	Long	Long	Short
PM Mechanics	Intense	Intense	Loose
Decisions	15,000	7,500	500

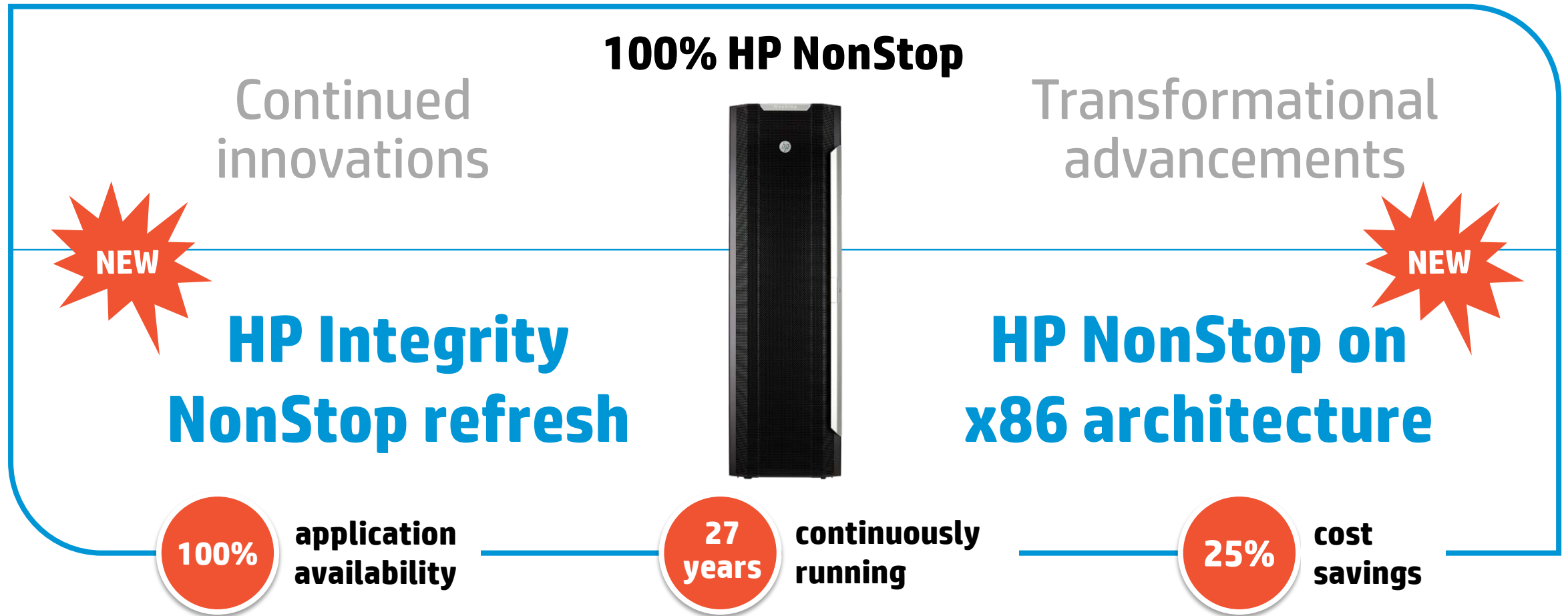
Tandem vs. HP NonStop – a magnificent transformation

- ▶ There is a HUGE difference between a 'Tandem' and a HP NonStop
- ▶ Tandem' applications can be inflexible and costly but....
...HP NonStop systems are Open and cost effective!



Revolutionizing the always-on, globally-connected world

Industry's first flexible approach to a 100% fault-tolerant infrastructure



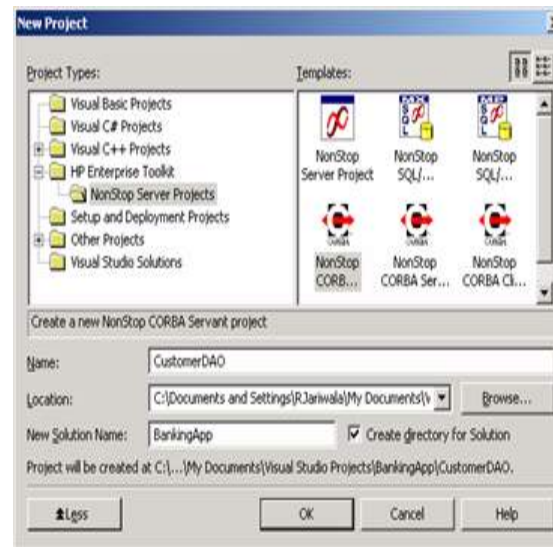
A modern application environment, with NonStop fundamentals

Develop Application programming models	ECLIPSE	Open Source Java Frameworks			
		Apache Tomcat			
		Certified Java SE Platform (JDK and JRE)			
		SOA Infrastructure (SOAP, XML, HTTP, WSDL)			
Deploy Application infrastructure	NonStop TS/MP				
	NonStop OS				
Differentiate	Network access	SOA infrastructure	Open source Java frameworks	Business logic	Database
Transparent Scalability	✓	✓	✓	✓	✓
Transparent Fault Tolerance	✓	✓	✓	✓	✓

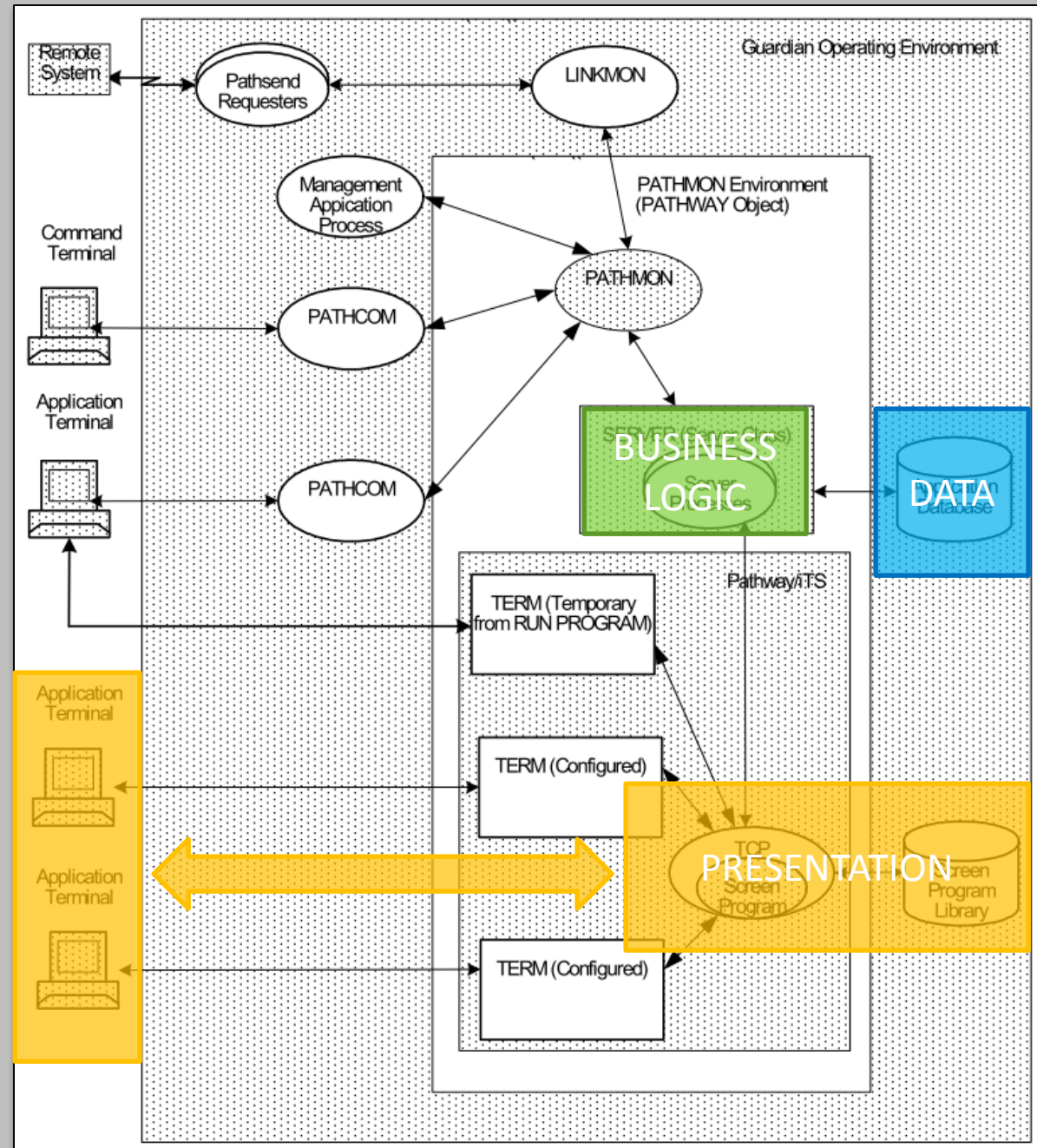


HP NonStop: Now with Industry Standard Software Development

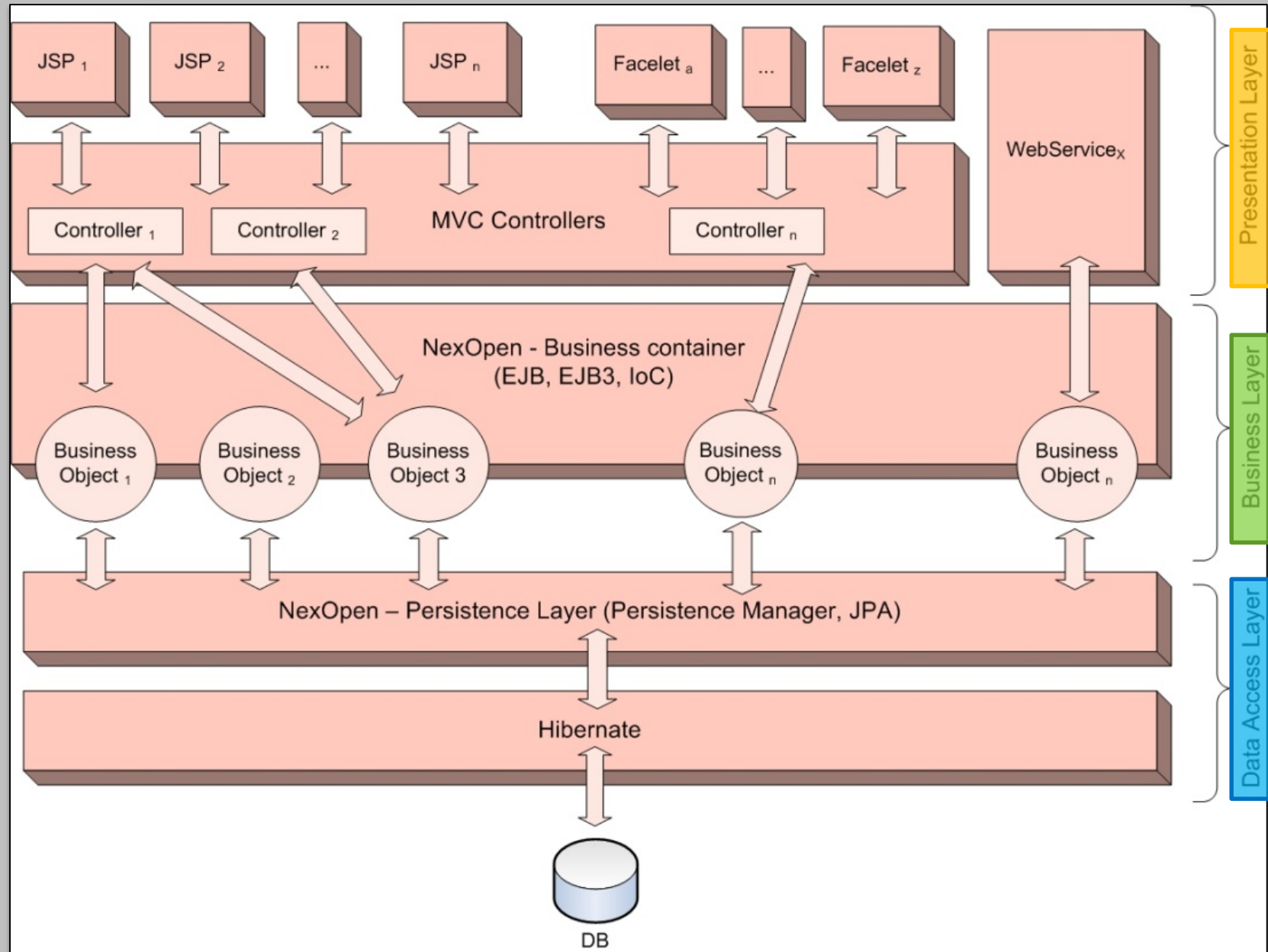
Featuring



NonStop
applications
designed 20
or 30 years
ago already
followed
modern
Paradigms



Modern application design follows very similar approaches

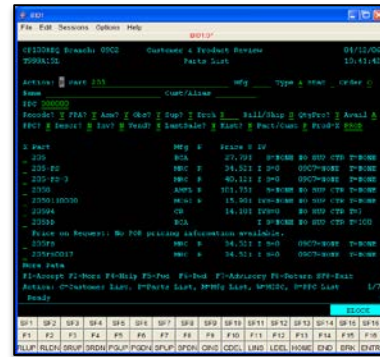


Application Modernization – step-by-step

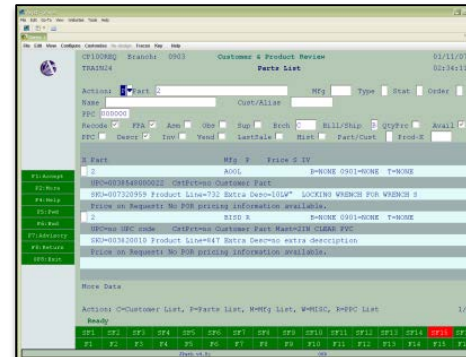
1. Improving the user experience
2. Infrastructure for growth and connectivity
3. A solid foundation that supports the products and skillsets you'll need now and into the future

Modern User Interfaces

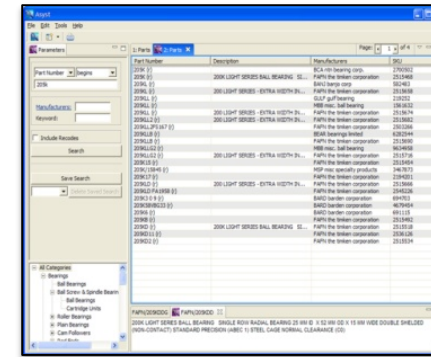
A User Experience Every User Can Love!



Green Screens



Rapid GUI
modernization
(no coding required)

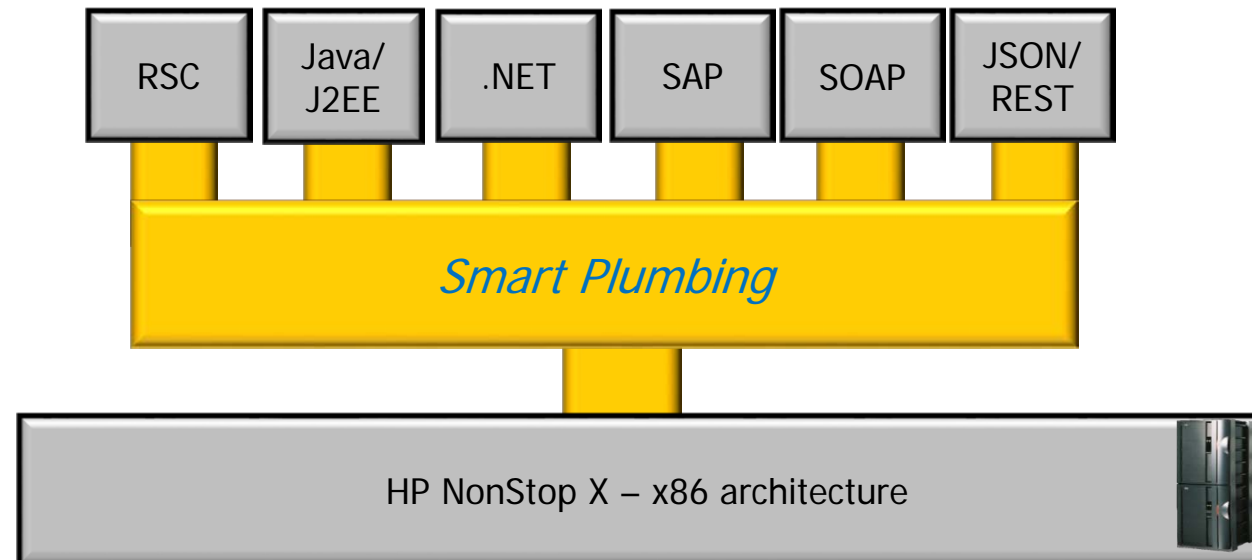


All New
User Experience



Assembling applications – connecting 'services'

Seamless access to/from NonStop application services



comForte's CSL modernizes the application 'plumbing'
Both the Services and App-infrastructure layers are now flexible and Open

Is your database *limiting* or *enabling* your applications?

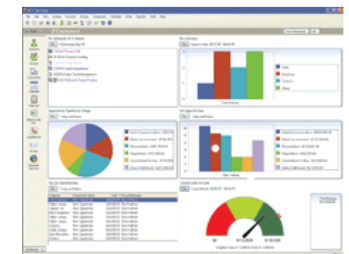
Proprietary (Enscribe) databases - *limiting*

- Reduced productivity – thereby increasing costs
 - Require manual workarounds to compensate for database limitations
- Reduced competitiveness
 - Failing to provide adequate or timely business data from/to your enterprise wide systems



Open (SQL) databases - *enabling*

- Leverage readily available skills
- Support cross-platform development
- Native compatibility with 3rd party tools and enterprise data models



Pro Tip:

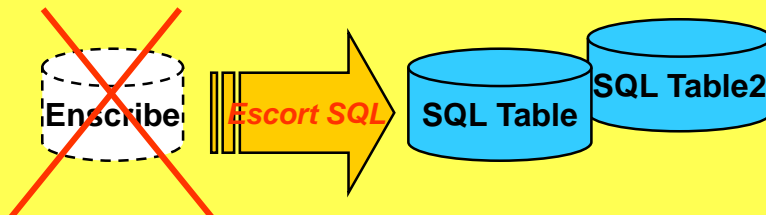
Your database determines the tools and skills necessary throughout the rest of the system.
SQL 'standard' database is critical for interoperability, cross-platform development and data access.



Transparent database conversion and interception

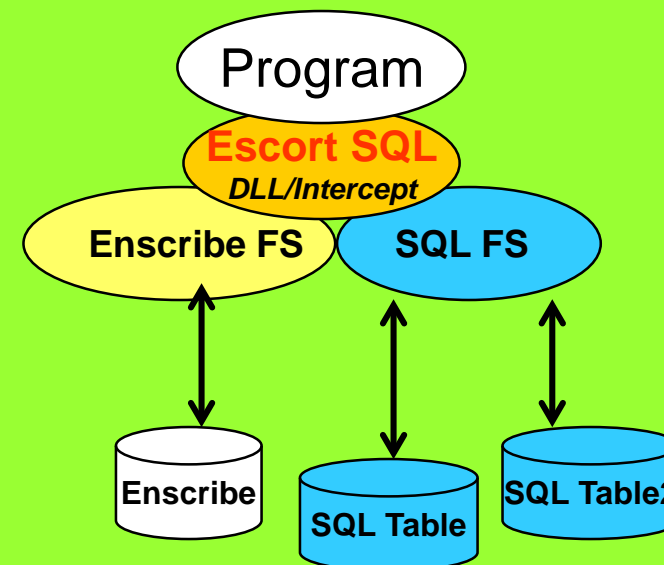
Database Conversion

- ❖ Converts files one at a time
- ❖ Offers numerous conversion / transformation capabilities:
 - Extensible datatypes
 - Custom transformations
 - Record mapping
 - Normalization
 - Array mapping
 - Key mapping

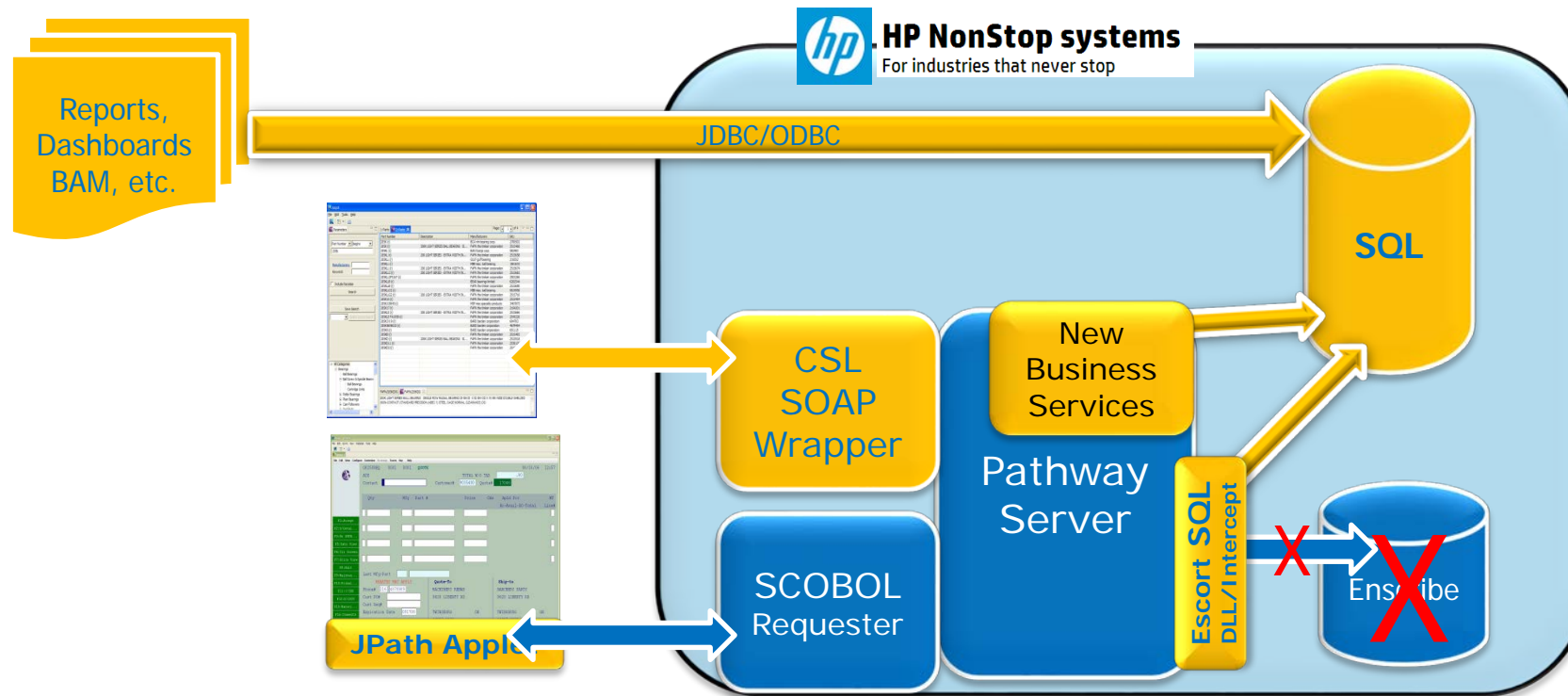


Runtime Enscribe Emulation

- ❖ Captures Enscribe calls and converts them to SQL statements
- ❖ Invisible to the application



Complete GUI, Web Services & Database modernization



- ▶ Zero programming / rapid conversion of "Green Screen" to GUI.
- ▶ SOAP enable Pathway servers for Web service access to 'services' on NonStop or other platforms
- ▶ Transparently convert Enscribe files to SQL tables with little or no reprogramming
- ▶ SQL tables accessible directly via JDBC and ODBC for leverage across enterprise
- ▶ Migration to Open for both application (using SOA) and database (using NonStop SQL)

Modernization in the real world!

 There's a storm a brewing

Went from Green Screen to GUI...

...and proprietary Enscribe to SQL

Went from Tandem elimination...

...to HP NonStop being strategic!



Built over a weekend!

The “perfect storm” for modernizing NonStop Apps

- ▶ HP is 100% committed to the NonStop server platform
 - ▶ HP NonStop X
 - ▶ The world's most reliable / scalable x86 server – second to none!
 - ▶ Perfect platform to host Java/JSON apps w/massive scale and dial-tone reliability
 - ▶ Object-code/plugin compatible replacement for 'Tandem' systems
- ▶ comForte world-wide support for key modernization technologies
 - ▶ From the ground-up – database modernization – Escort SQL
 - ▶ Messaging / integration – CSL
 - ▶ From the user-in – green-screen to GUI – JPath & CSL



HP NonStop application modernization from the Ground-up and the User-in

comForte - bringing new life to NonStop apps



Thank you!

Questions ?

www.comForte.com