



**Hewlett Packard
Enterprise**



HPE DATA BACKUP & MANAGEMENT SOLUTIONS: DELIVERING DIGITAL RESILIENCE TO PROTECT AND MODERNIZE HPE NONSTOP DATA

Mike Mitsch
Director, Global Business Development
Storage and Management Products
ETI-NET

April 10, 2024



CONFIDENTIAL | AUTHORIZED
For HPE Partners And HPE CUSTOMERS ONLY

Disclaimer

This presentation contains forward-looking statements regarding future operations, product development, product capabilities, and availability dates. This information is subject to substantial uncertainties and is subject to change at any time without prior notification. Statements contained in this presentation concerning these matters only reflect ETI-NET's predictions and/or expectations as of the date of this presentation and actual results and future plans of ETI-NET may differ significantly as a result of, among other things, changes in product strategy resulting from technological, internal corporate, market and other changes. This is not a commitment to deliver any material, code or functionality and should not be relied upon in making purchase decisions.

Specifications subject to change without notice and delivery dates/timeframes are not guaranteed... purchasing decisions should not be made based on this material without verifying the desired features are available on the platforms environments desired.

NOTICE: These products do not guarantee that you will not lose any data; all user warranties are provided solely in accordance with the terms of the product License Agreement. Each user's experience will vary depending its system configuration, hardware and other software compatibility, operator capability, data integrity, user procedures and separation of duties, backups and verification, network integrity, third party products and services, modifications and updates to these products and updates and others, as well as other factors. Please consult with your supplier and review our license agreement for more information.

All trademarks mentioned in this presentation are the properties of the respective owners.

HPE NonStop Backup Discussion Topics

▣ HPE Digital Resiliency Framework & ETI-NET Alignment

▣ Data Recovery for Cybersecurity

- Resiliency Requirements
- Architecture Requirements
- Recovery Steps
- Considerations

▣ Strategic Partners

- Immutability
- Verification

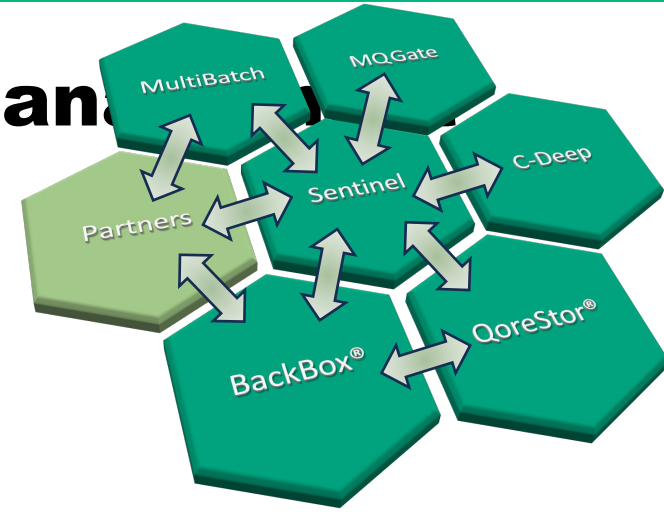
▣ EMEA Customer Success

▣ Wrap-up & Resources

Company Recap

30+ Yrs. NonStop Backup & Advanced Management

- ~1K Global deployments / HQ: Montreal Canada & Manchester UK
- APIs, Data transfer & migration, system & transaction monitoring, IBM MQ rationalization, batch optimization, & cross platform
- Pro-Partner Strategy



HPE Technology Partner since 2013



NonStop Catalog* since 2019

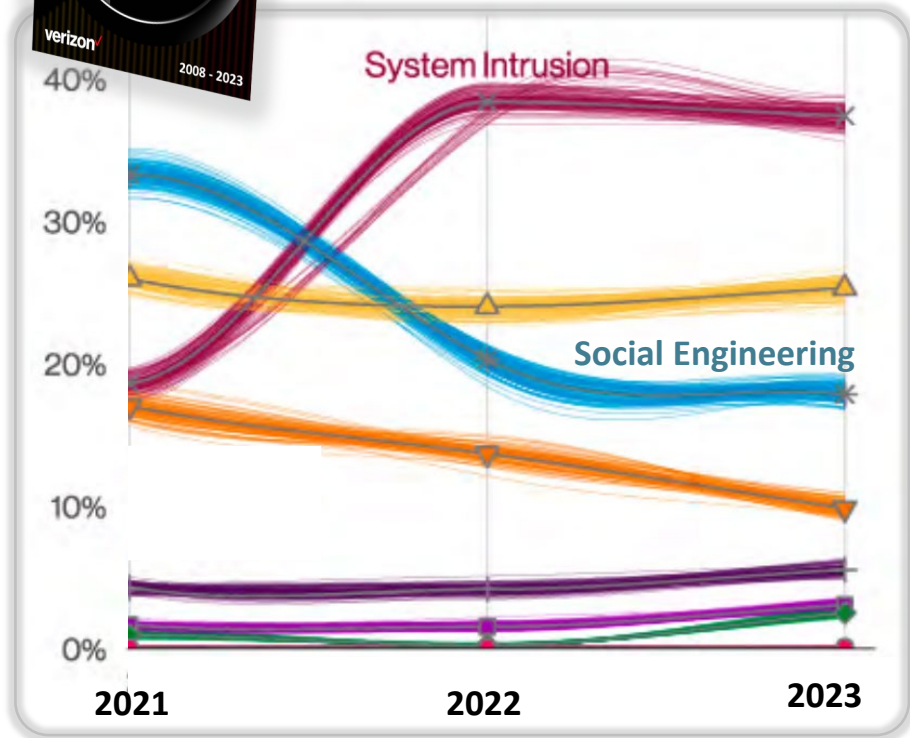
* MultiBatch available by HPE SDI Program

Tested Products on HPE				
HPE Product Name	HPE Product Version	Partner Product Name	Partner Product Version	Date Tested
HPE NonStop X	L22.09	BackBox	4.11	08/01/2023
HPE NonStop i	J06.23.01	BackBox	4.11	08/01/2023
HPE Virtualized NonStop	L22.09	vBackBox	4.11	08/01/2023
HPE NonStop X	L22.09	Sentinel	1.02	08/01/2023
HPE NonStop i	J06.23.01	Sentinel	1.02	08/01/2023
HPE NonStop X	L22.09	C-Deep	1.1	08/01/2023
HPE Virtualized NonStop	L22.09	C-Deep	1.1	08/01/2023
HPE NonStop i	J06.23.01	C-Deep	1.1	08/01/2023
HPE NonStop X	L22.09	MQGATE	1.4	08/01/2023
HPE NonStop i	J06.23.01	MQGATE	1.4	08/01/2023
HPE NonStop X	L22.09	MultiBatch	10	08/01/2023
HPE NonStop i	J06.23.01	MultiBatch	10	08/01/2023
HPE Virtualized NonStop	L22.09	MultiBatch	10	08/01/2023

Cybersecurity Trends Driving Compliance Regulation

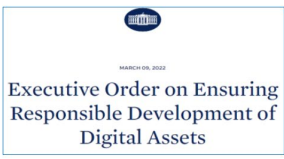


Verizon Annual Data Breach Investigations Report: EMEA



Frequency	Top patterns	Threat actors	Actor motives	Data compromised
2,557 incidents, 637 with confirmed data disclosure	System Intrusion, Social Engineering and Basic Web Application Attacks represent 97% of breaches	External (98%), Internal (2%), Multiple (1%) (breaches)	Financial (91%), Espionage (8%), Ideology (1%), Fun (1%) (breaches)	Credentials (53%), Internal (37%), System (35%), Other (15%) (breaches)

“When targeting companies, criminals proceed to target the company’s backup Data and Systems.”



<https://www.verizon.com/business/resources/reports/dbir/2023/master-guide/>

DIGITAL RESILIENCE



- Identify Assets:**
- Backup Tape Catalog
 - VTCs & Data Volumes
 - Data Locations
 - Data Tiering Policy
 - Immutable Versions

IDENTIFY

Understand the environment

PROTECT

Implement safeguards and controls

- Protection:**
- Data Encryption @ Rest & In-Transit
 - Replication between VTCs
 - 3-2-1-X directly from the VTC
 - Compliance/Governance Locking
 - \$SYSTEM Snapshot
 - User Role Separation
 - 3rd Party Solution Collaboration

DETECT

Discover Cyber Events

- Detection:**
- EMS Alerting
 - XYPRO VTC Appliance Scan
 - Intelligent Subsystem Status

- Recovery:**
- BareMetal \$SYSTEM Recovery
 - Alternate Location Restoration

RECOVER

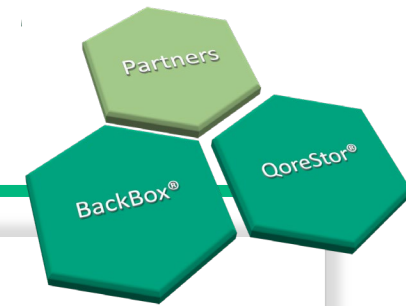
Maintain resilience and business continuity

RESPOND

Actions and resources to deal with the event

- Response:**
- Restoration Source Selection
 - Version Metadata
 - EMS Event Actions
 - Cloud Reader for Forensics

HPE VTC Digital Data Resilience



■ BackBox

- NonStop Backup Data Stores & Management
- \$SYSTEM Disk Snapshot & Stand-Alone Restoration
- Fault Tolerant Redundancy Operation

■ QoreStor

- Encryption & Replication
- Deduplication, Data Tiering, Remote Reader

■ Partnerships

- Security Scanning
- S3 Service Validation

Hewlett Packard Enterprise Solution brief

Modern backup and data security solutions for HPE NonStop servers

NonStop and optional backup and restore processes using an advanced control of architecture that is designed for digital

Advantages

- The most secure and virtual tape and primary storage solution for systems
- Protects backup data by encrypting data stored on QoreStor SDS before VTC to secondary backup as well as encrypting transit to a secondary location
- Utilizes VTC CPU resources to encrypt and deduplicate data, saving physical space expense as well as network bandwidth
- Provides NonStop availability to directly implement 3-2-1-1 best practice for multiple time points, meeting corporate requirements
- Utilizing S3 storage supports Cloud configurations and ability to restore to alternate locations
- Scalable architecture designed to support increasing data amounts within shrinking time windows
- Provides NonStop Operations direct control over backup data

BackBox

QoreStor

Scanning

Validation

HPE VTC

NonStop with QoreStor

While BackBox VTCs can be used as a stand-alone solution, it is in its integration with internal QoreStor that organizations to protect their data across other services and storage

Unlike other virtual tape products for NonStop systems, BackBox for HPE NonStop with QoreStor, stores and encrypts catalogs and metadata that are resident on the HPE NonStop system, enabling protection via Transaction Management Facility (TMF).

The external platform to the HPE NonStop, the BackBox with QoreStor replaces data in real time across VTC, so failures do not endanger backup data and additional VTCs with QoreStor can linearly increase backup throughput.



Partnership: XYPRO Appliance Scanning

“This collaboration demonstrates ETI-NET’s commitment to continue to deliver advanced HPE NonStop cybersecurity data protection.”

Benoit Caron, COO of ETI-NET



Protecting NonStop Backup System & Data as part of the NonStop Estate.

The screenshot displays the XYPRO Appliance Sentry dashboard. The top navigation bar includes "DASHBOARD", "ASSETS", "MONITORS", "INCIDENTS", "APPLIANCE SENTRY" (highlighted), "COMPLIANCE", and "ACTIVITIES". The left sidebar lists "NONSTOP SERVER" with sub-items "\CGNAC2", "\DEMO", and "\GALAXY", and "CONSOLE" with sub-items "VTCGEN10" and "VTRGEN10". The main content area is titled "NonStop Appliances" and shows a "Console" button for "VTCGEN10" (Microsoft Windows Server 2019 Standard). A "Last Scan" timestamp of "2023-12-06 00:44:56.503 UTC" is displayed. Below this, a row of six status cards is shown, each with an icon and a "Show Details" link: "Console Online", "Logons (last 7 days) 2 Failed | 1429 Successful", "Firewall Enabled Enabled Enabled Domain Private Public", "Firewall Rules 209 Inbound | 155 Outbound", "Antivirus Enabled Updated 2023-12-04 06:46:55.000 UTC", and "Windows Updates Enabled, Manual 4 Missing | 15 Installed".

S3 Partnership: Scality

Supported Cloud Tier providers

ETI-NET and HPE test and qualify specific S3 providers to ensure optimal interoperability, security, and support. S3 Providers that ETI-NET and HPE recommend are listed in the S3 compatibility matrix.

▣ Functionality

- Provides VTC And Stand-alone Setup
- Connectivity

▣ Support

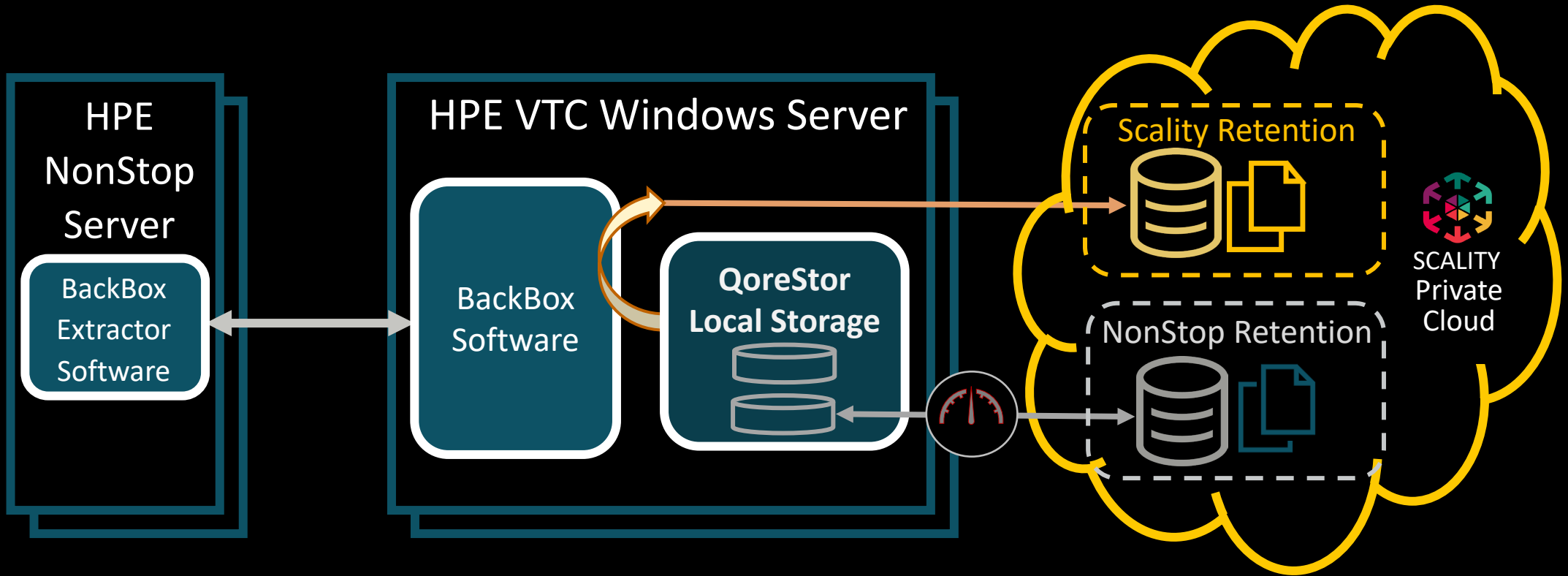
- Adheres To AWS S3 API Specification
- Escalation Path To Resolve Issues

▣ Advanced Immutability

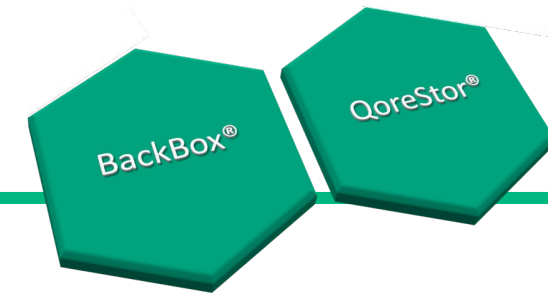
- Object Locking
- Governance And Compliance Modes
- Retention Separation Of Duty



HPE VTC CLOUD TIERING & IMMUTABILITY OPTIONS



HPE VTC S3 Use Cases



1. 3-2-1 HPE Compliance

Using Cloud Tiering to replicate data as the 3rd copy in the 3-2-1 rule to an off-prem storage location.

2. Data Tiering

Cloud tiering provides the option to migrate data to the S3 service to reduce local QS physical data size and maintain data pointer reference on a 1:3 basis (3x data can be stored in the cloud)

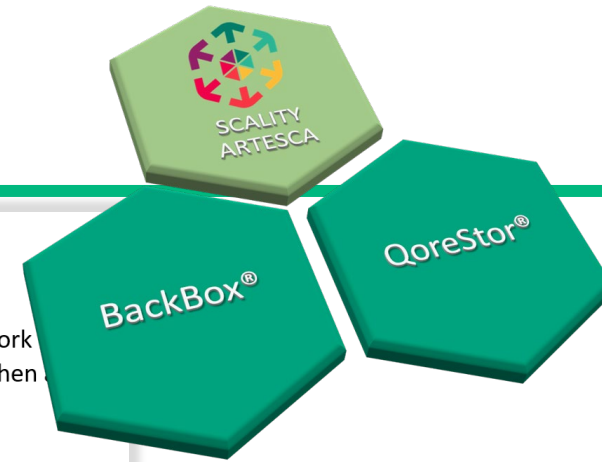
3. Object Locking

Setting Immutability of NonStop backup data.

4. Disaster Recovery Restoration

Using another VTC with QoreStor at a remote location to restore the NonStop backup data to a readable form from the S3 location.

HPE/ETI-NET S3 VTC Considerations



Product Vetting Advisory HPE BackBox VTC / QoreStor S3 Cloud Connectivity April 2024

Article Type:	Product Vetting Advisory	
Product:	HPE BackBox SW and QoreStor SW	
Version:	T0954V04^AAW and T1117V01^AAB and subsequent releases	
Summary:	Supported Cloud Vendors & Use Cases	
Audience:	HPE Pre-Sales and Sales	
Description:	S3 functionality is a new feature enabled with T0954V04^AAW of the BackBox/QoreStor VTC R4 release. S3 Connectivity can be implemented as a policy driven extension of the VTC which utilizes the S3 storage protocol to replicate, copy and recover NonStop backup data from within the VTC to and from an S3 object storage. ETI-NET and HPE have chosen to test and certify S3 interoperability and recommend use case review to ensure the quality and protection of NonStop data.	
Support Statement:	ETI-NET and HPE test and qualify specific S3 systems to ensure optimal interoperability, security, and support. S3 providers that ETI-NET and HPE recommend are listed and updated in the S3 compatibility matrix on the ETI-NET website: https://etinet.com/products/backbox-dedupe-software/S3support/ Note: ETI-NET and HPE also offer "S3 Compatible" as an option for clients that wish to use another S3 device or service that has not been certified. In this case ETI-NET and HPE support S3 services on a best effort basis.	
Supported Cloud vendors	<ul style="list-style-type: none"> • Amazon Web Services S3 • BackBlaze S3 Cloud Tier • Google S3 Cloud Tier • IBM S3 Cloud Tier 	<ul style="list-style-type: none"> • Microsoft Azure Cloud Tier • Scality ARTESCIA • Wasabi S3 Cloud Tier
Use Cases:	1.) Compliance with the HPE 3-2-1 Best Practices Using Cloud Tiering to replicate data as the 3 rd copy in the 3-2-1 rule to an off-prem storage location. 2.) Data Tiering Cloud tiering provides the option to migrate data to the S3 service to reduce local QS physical data size and maintain data pointer reference on a 1:3 basis (3x data can be stored in the cloud) 3.) Object Locking Setting Immutability of NonStop backup data. 4.) Disaster Recovery Restoration Using another VTC with QoreStor at a remote location to restore the NonStop backup data to a readable form from the S3 location.	

VTC S3 Cloud Connectivity Vetting Worksheet

HPE and ETI-NET recommends that the HPE Sales and Presales teams work customer to complete the attached worksheet prior to quoting the VTC when Data Repository is a requirement and return to HPE and ETI-NET:
Send to ozen.ercevik@hpe.com Cc to: mike.mitsch@etinet.com

Question	Reply
1 Is the S3 Provider listed by ETI-NET? If no, is the customer willing to accept "best effort" support?	
2 Which use case(s) apply to the request?	
3 Are other use cases required? If so please explain.	
4 Does the account have a specific compliance requirement and if so, which specific one?	
5 Will the S3 storage resource implement Object Locking? If yes, is the object locking Governance +/- Compliance Mode?	
6 How frequently is data expected to be placed into the S3 repository?	
7 How much logical data is expected to be moved each day, week, and month?	
8 What is the network bandwidth (Gbps) between the VTC and the S3 target?	
9 Are other systems utilizing the same S3 resource?	
10 Will all files in the S3 storage resource utilize the same retention policy?	
11 Are the retention settings of the S3 data the same as NonStop tape retention settings?	
12 Is the data in the S3 repository to be an additional copy, beyond 3-2-1?	
13 Is the client's NonStop operator the administrator of the S3 resource?	
14 Other Comments:	

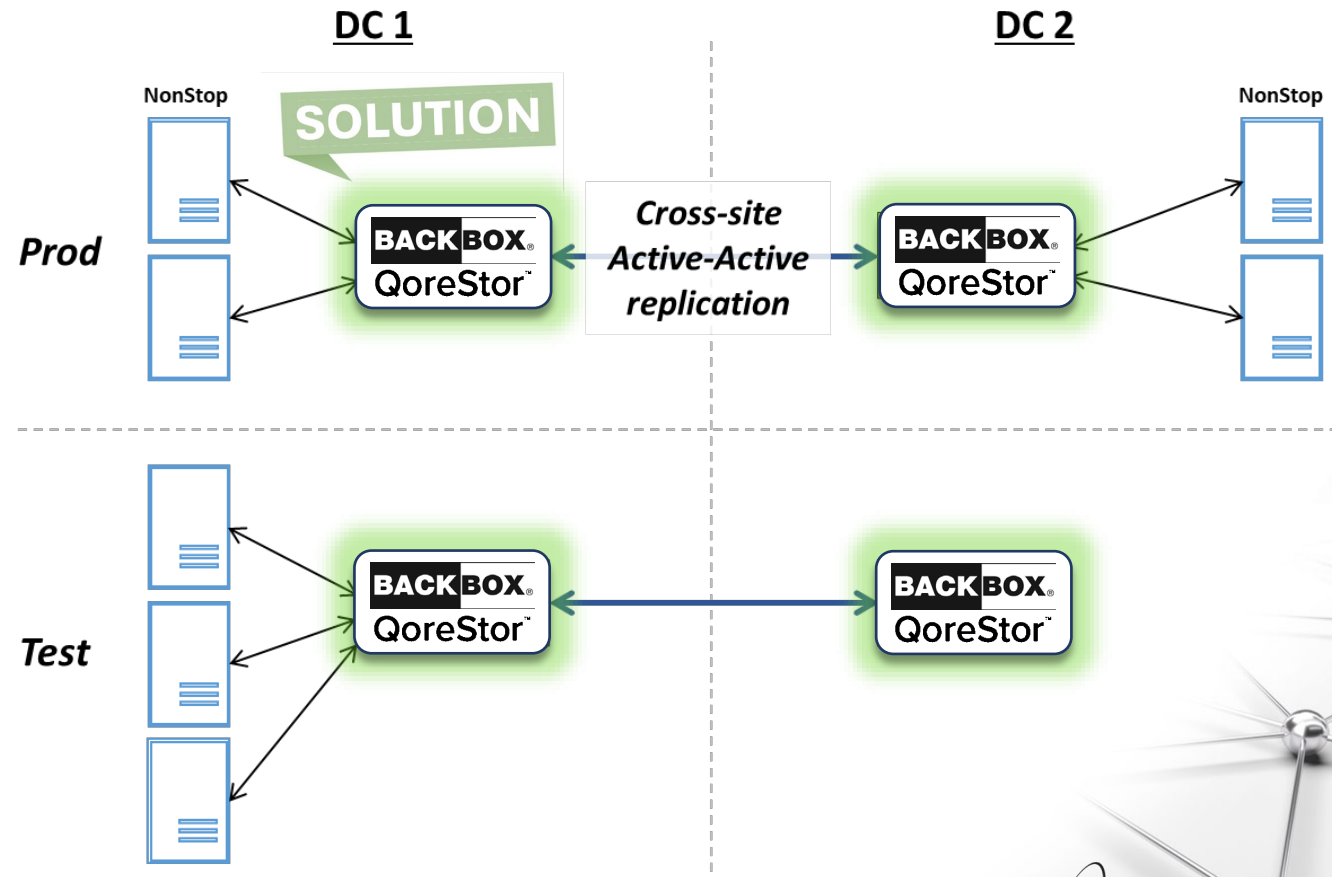
Included in Handouts.

CHALLENGE

Immediate Backup Solution Replacement

Key Requirements:

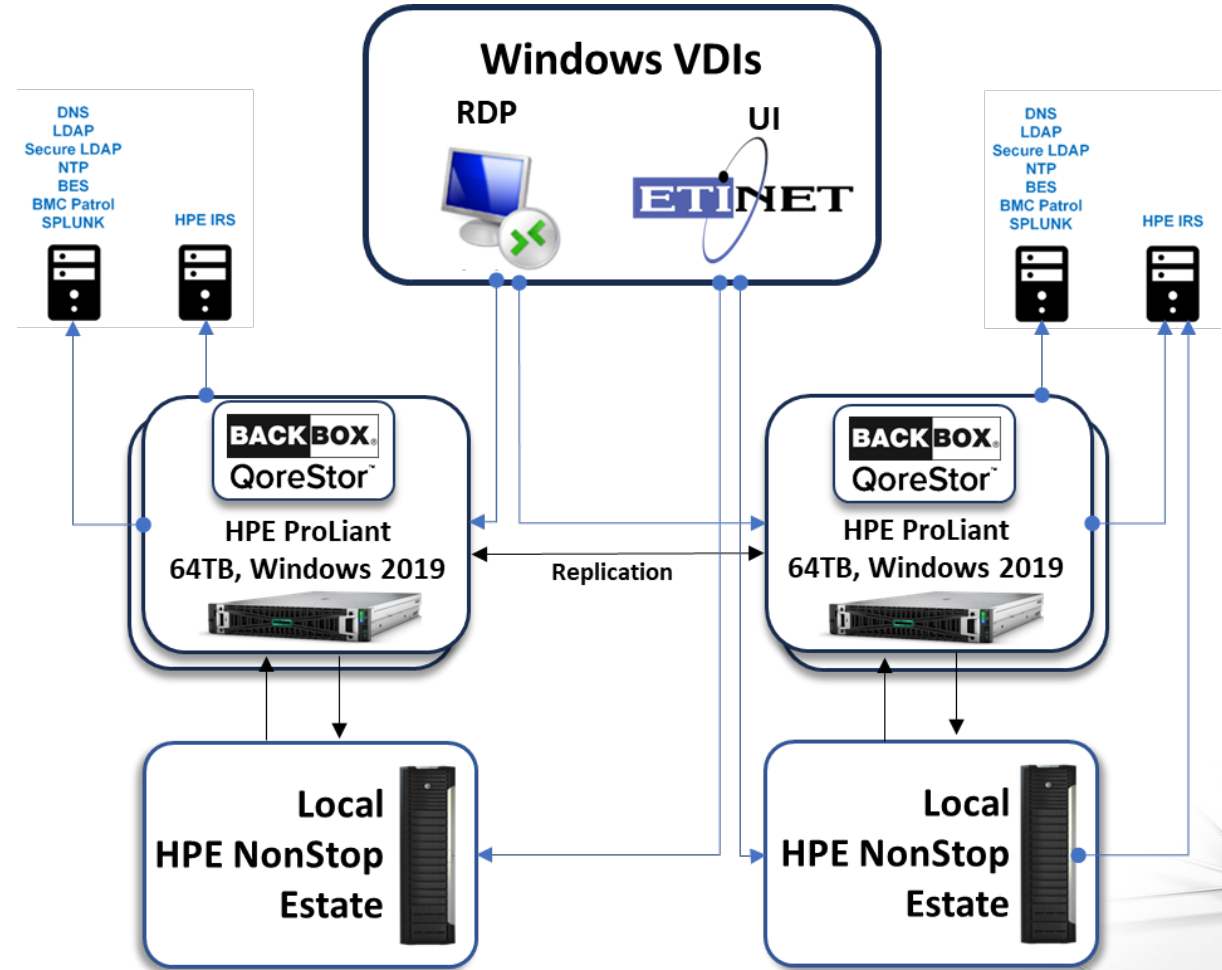
- Robust data replication between sites
- Integrated storage managed by VTC
- Data encryption at-rest (within the VTC) and in-transit (cross-site)
- Resilient connectivity to multiple NonStop systems via multiple FC
- Scheduling urgency: On-site and sustaining support (preferably from HPE) for installation, configuration, updates, and training



Production Overview

4x VTCs

- **HPE ProLiant Servers**
 - 64TB Storage (locally integrated)
 - Backbox (VTC MC & UI) runs in Windows
 - QoreStor runs as a VM in Hyper-V
 - 6 FC connections (per appliance)
- **Windows VDIs deliver access to BackBox / QoreStor & NonStop**
- **Infrastructure HPE IRS remote monitoring to each VTC**



Simple installation & on-ramp to production

- Start to finish under 1 Quarter to select, order, install, and deploy 4x VTC with 12x NonStop Systems into production

Substantial Savings

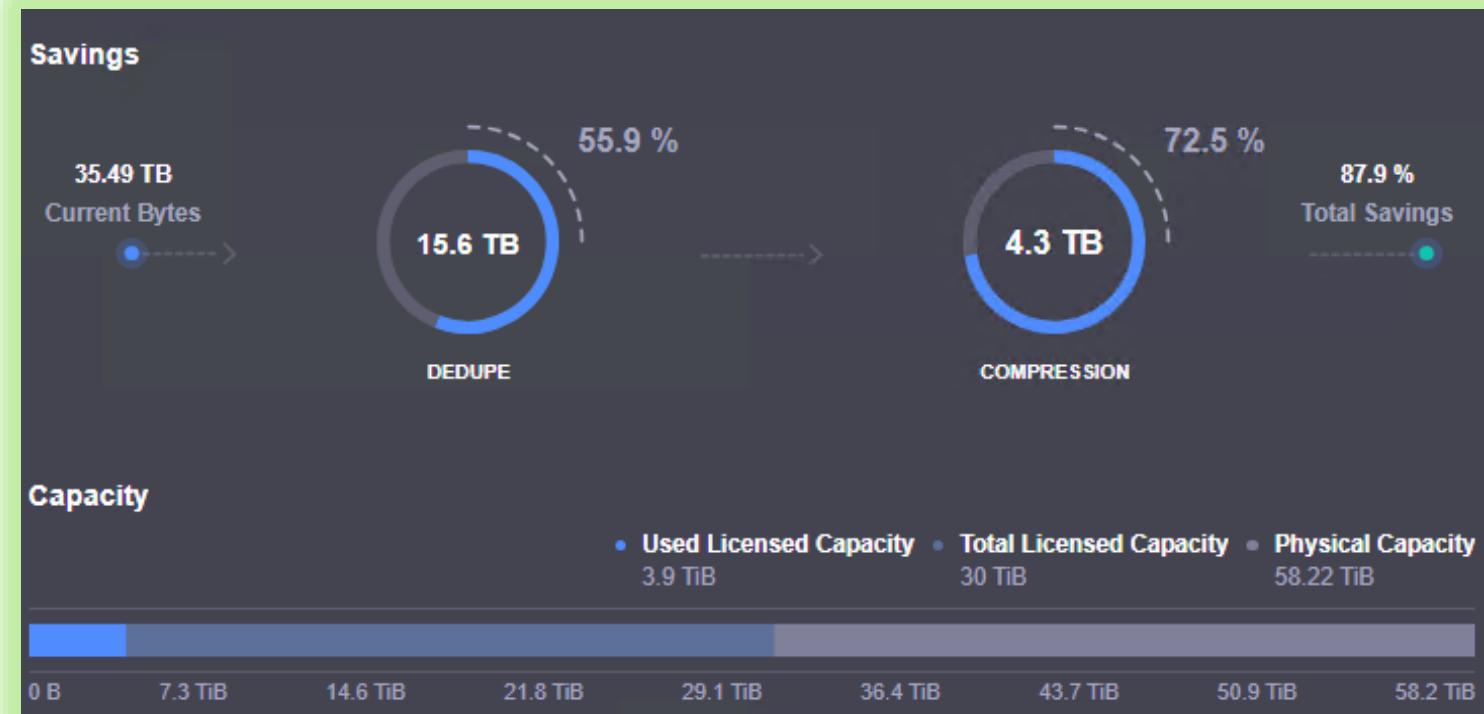
- Common VTC Platform
- GUI
- 88% Reduction in Data

Enhanced Security

- Encryption at Rest & In Transit

Enhanced Support

- Streamlined & Faster
- Common architecture (VTC & Storage)



“The results of the project have been very successful; there were minimal issues encountered – very light touch. The BackBox-QoreStor de-duplication and compression delivers significant storage savings”

- Sr. NonStop IT Director

“When my customer had an issue with their Backup vendor going out of business, we knew from experience that the ETI-Net/HPE BackBox solution would be a great fit. The support we had from both ETI-Net and HPE Services Technical Consultants made the transitions to BackBox quick and painless and the benefits of QoreStor surpassed our expectations.”

- Iain Liston-Brown, HPE NonStop Presales

Resources

▣ S3

- Cloud Vetting
- Question / Answer

▣ ETI-NET/XYPRO

- White Paper / Data Sheet
- Question / Answer



>30 Years of Innovating
Together



Thank you



Product Vetting Advisory

HPE BackBox VTC / QoreStor S3 Cloud Connectivity

April 2024

Article Type:	Product Vetting Advisory	
Product:	HPE BackBox SW and QoreStor SW	
Version:	T0954V04^AAW and T1117V01^AAB and subsequent releases	
Summary:	Supported Cloud Vendors & Use Cases	
Audience:	HPE Pre-Sales and Sales	
Description:	S3 functionality is a new feature enabled with T0954V04^AAW of the BackBox/QoreStor VTC R4 release. S3 Connectivity can be implemented as a policy driven extension of the VTC which utilizes the S3 storage protocol to replicate, copy and recover NonStop backup data from within the VTC to and from an S3 object storage. ETI-NET and HPE have chosen to test and certify S3 interoperability and recommend use case review to ensure the quality and protection of NonStop data.	
Support Statement:	<p>ETI-NET and HPE test and qualify specific S3 systems to ensure optimal interoperability, security, and support. S3 providers that ETI-NET and HPE recommend are listed and updated in the S3 compatibility matrix on the ETI-NET website: https://etinet.com/products/backbox-dedupe-software/S3support/</p> <p>Note: ETI-NET and HPE also offer “S3 Compatible” as an option for clients that wish to use another S3 device or service that has not been certified. In this case ETI-NET and HPE support S3 services on a best effort basis.</p>	
Supported Cloud vendors	<ul style="list-style-type: none"> • Amazon Web Services S3 • BackBlaze S3 Cloud Tier • Google S3 Cloud Tier • IBM S3 Cloud Tier 	<ul style="list-style-type: none"> • Microsoft Azure Cloud Tier • Scality ARTESCIA • Wasabi S3 Cloud Tier
Use Cases:	<ol style="list-style-type: none"> 1.) Compliance with the HPE 3-2-1 Best Practices Using Cloud Tiering to replicate data as the 3rd copy in the 3-2-1 rule to an off-prem storage location. 2.) Data Tiering Cloud tiering provides the option to migrate data to the S3 service to reduce local QS physical data size and maintain data pointer reference on a 1:3 basis (3x data can be stored in the cloud) 3.) Object Locking Setting Immutability of NonStop backup data. 4.) Disaster Recovery Restoration Using another VTC with QoreStor at a remote location to restore the NonStop backup data to a readable form from the S3 location. 	



VTC S3 Cloud Connectivity Vetting Worksheet

HPE and ETI-NET recommends that the HPE Sales and Presales teams work with customer to complete the attached worksheet prior to quoting the VTC when a S3 Data Repository is a requirement and return to HPE and ETI-NET:

Send to ozen.ercevik@hpe.com Cc to: mike.mitsch@etinet.com

	<u>Question</u>	<u>Reply</u>
1	Is the S3 Provider listed by ETI-NET? If no, is the customer willing to accept “best effort” support?	
2	Which use case(s) apply to the request?	
3	Are other use cases required? If so please explain.	
4	Does the account have a specific compliance requirement and if so, which specific one?	
5	Will the S3 storage resource implement Object Locking? If yes, is the object locking Governance +/- Compliance Mode?	
6	How frequently is data expected to be placed into to the S3 repository?	
7	How much logical data is expected to be moved each day, week, and month?	
8	What is the network bandwidth (Gbps) between the VTC and the S3 target?	
9	Are other systems utilizing the same S3 resource?	
10	Will all files in the S3 storage resource utilize the same retention policy?	
11	Are the retention settings of the S3 data the same as NonStop tape retention settings?	
12	Is the data in the S3 repository to be an additional copy, beyond 3-2-1?	
13	Is the client’s NonStop operator the administrator of the S3 resource?	
14	Other Comments:	



HPE VTC BackBox / QoreStor Cloud Tiering Product Vetting Question / Answer

Question		Response
1	Does BackBox without QoreStor support S3?	No. BackBox does not natively support S3 storage. QoreStor is required to support S3 by the Cloud Tiering configuration option.
2	Does BackBox alone support or implement immutability?	BackBox by itself does not offer immutability. For clients that only have BackBox – immutability must be implemented by the customer’s 3 rd party storage.
3	Does BackBox with QoreStor support immutable storage products & services?	Through the cloud tiering option, BackBox and QoreStor can implement immutability settings on S3 Storage and Cloud Services. Check with ETI-NET or HPE to consult on the optimal approach that meets the organization’s 3-2-1 cybersecurity requirements.
4	Can the \$SYSTEM be encrypted and placed on a Cloud Tier?	Yes, by configuring QoreStor and following the \$SYSTEM snapshot process by HPE and ETI-NET, the \$SYSTEM image can be encrypted and placed on a Cloud Tier as well as kept locally as a single file.
5	Is there a specific level of NonStop system that is required to support \$SYSTEM snapshot?	The NonStop system must be at RVU L23.08 in to support the System Disk Snapshot functionality. The minimum RVU is L21.06 w/the required SPRs: –T0853L03^DCR CLIM Software DVD (CLIM DVD) –T0682L02^BBN OSM Service Connection (RVU) –T0634H06^ACY OSM Console Tools DVD (NonStop Console DVD)
6	When and how frequently should the “System Build Snapshot” be run?	While it is up to the customer, it is recommended that at a minimum, it should be performed after: a.) Every RVU upgrade and any SPR upgrade installed in \$SYSTEM. b.) Any hardware configuration change in the system like addition/deletion of CLIMS, disks, CPUs etc. Use the OSMCONF flags to manage the NSK CPU priority and CPU usage in Storage CLIMs
7	Does System Build Snapshot include NonStop Memory?	No. The \$SYSTEM snapshot does not include NonStop CPU memory dump.
8	Does the “System Build Snapshot” include the other volume restoration steps including the TMF?	The \$SYSTEM snapshot takes backup of \$SYSTEM volume only and the “System disk restore tool” restores it. No additional steps are required after running the tool. For all other volumes, or TMF audit trails, we should use the regular Backup Restore or BR2.
9	In the event of a breach, how does the NonStop customer identify a backup that is not compromised by malware?	Identification of malware on a NonStop system is considered a “forensics” exercise. Using XYPRO information on changes within the NonStop system can provide insight as to files / events that can provide a forensics expert the information required to identify the insertion point, and to use ETI-NET products to selectively restore data to bring NonStop systems to an operational state. Additionally, XYPRO offers professional services with trained staff familiar with their tools to help NonStop customers identify suspicious changes.





Question		Response
10	What roles does BackBox / QoreStor perform in the NIST Respond and Recovery stages?	<p>The Respond function includes appropriate activities to take action regarding a detected cybersecurity incident. In the Respond phase - analysis is conducted to ensure effective response and support recovery activities including forensic analysis. In this stage, BackBox and QS confirm the location and timestamp of the restoration assets, that were identified in the forensic analysis. The Recover Function identifies appropriate activities to maintain resilience and to restore any capabilities or services that were impaired due to a cybersecurity incident. In the Recovery stage, BackBox and QoreStor provide the ability to restore specific files, volumes, ranging back to the “Stand Alone Load” which can restore the various copies of \$SYSTEM image, supporting the timely recovery to normal operations to reduce the impact from a cybersecurity incident.</p> <p>https://www.nist.gov/cyberframework/online-learning/five-functions#protect</p>



Question	Response
1 What is the relationship between XYPRO and ETI-NET?	As per the ETI-NET / XYPRO press release https://etinet.com/news/eti-net-xypro-enhanced-cybersecurity-collaboration/ ETI-NET and XYPRO share a common vision of protecting NonStop systems. Both firms have committed to work together to ensure that HPE’s Virtual Tape Controllers deployed with integrated QoreStor storage management software can support XYPRO’s Security One Agents to scan the VTCs to identify vulnerabilities.
2 What specific ETI-NET Software was included in the testing?	The ETI-NET BackBox and QoreStor Version 4.12 software was tested: https://etinet.com/wp-content/uploads/2024/01/BackBox-E4.12-Release-Notes.pdf This testing was performed using an HPE VTC ProLiant server preconfigured by HPE as the standard delivery platform.
3 What is the specific configuration of the VTC that was tested?	ETI-NET and XYPRO utilize the standard, preconfigured HPE VTC R4 and future RX releases that include all software No, the testing is performed on a released version of the HPE VTC with QoreStor software.
4 What metrics does the SecurityOne software scan on the VTC?	<ul style="list-style-type: none"> • Successful and Unsuccessful Logons into the VTC • Firewall Status of the VTC • All Ports and Identifies Open and Insecure Ports • Antivirus Status and Definitions • VTC Windows Operating System Update Status • Third Party Applications installed on the VTC • Security Configuration of the VTC based on CIS Benchmarks and HPE NonStop Security Hardening Guide • Requirements to meet PCI DSS Compliance
5 What is required to add the HPE BackBox VTC with QoreStor to the XYPRO Scan?	There are two prerequisites: <ol style="list-style-type: none"> 1.) XYPRO Security One Software 2.) XYRPO Security One Sentry Appliance Agent
6 Does the SecurityOne Software have access to NonStop backup data?	No, the XYPRO Security One Software scans the parameters of the VTC with QoreStor. QoreStor runs in a preconfigured VM that performs Encryption of Backup Data and is run within a Virtual Machine within the VTC Windows Operating System. Security One Sentry Agent scans the host Windows and native hardware environment, protecting parameter of the NonStop backup data residing within QoreStor.
7 Does the SecurityOne software scan storage external to the VTC with QoreStor?	No.
8 What specifically was changed with the SecurityOne software to support this scanning?	There are no material changes to the XYPRO software. However, though XYPRO’s SecurityOne “Organic Views” presentation of scanning data is consolidated, making it easier to understand all aspects of the ETINET NonStop Software and VTC within the NonStop estate.



Question		Response
9	What metrics are presented in the “organic views”	<ul style="list-style-type: none"> • NonStop Console Status which included ETI-NET BackBox and QoreStor UI • All logins to the VTC Server including NonStop process and administrative. • VTC Firewall Status, in terms of Domain, Public and Private • Inbound and Outbound Firewall Rules • Antivirus and updated status • Windows Operating System update status
10	Does SecurityOne provide a risk assessment summary of the VTC with QoreStor?	Yes, Security One provides an overall Risk Assessment of the VTC w/QoreStor classifies the risks based on HPE best practices of Critical, Major and Minor.
11	Does SecurityOne provide scanning of S3 data tiering?	No. However, utilizing QoreStor Cloud Tiering, all data sent to an S3 device is encrypted and deduplicated, making the importance of S3 bucket scanning not as important. With that said, clients using S3 services should be continuously checking S3 parameter setting to S3 configurations have not been compromised.
12	Does BackBox VTC software without QoreStor support S3 Storage?	No, the BackBox software on the VTC does not directly support Cloud Storage. However, BackBox with QoreStor supports S3 through “Cloud Tiering”. Cloud Tiering is a standard component interface that is available with the QoreStor software.
13	How is S3 Storage supported from the VTC?	Depending upon the specific use case(s), S3 storage can be supported through the “cloud tiering” functionality of QoreStor as well as from BackBox. Cloud Tiering allows a BackBox/VTC with QoreStor to “Tier” data to an S3 service or device to greater storage capacity.
14	Is Cloud Tiering an option or standard with QoreStor?	Cloud Tiering is included standard with each instance of QoreStor on a specific VTC.
15	Does Cloud Tiering Increase NonStop Backup Storage capacity?	Yes. Cloud Tiering increases the physical and logical capacity of the NonStop Backup storage by 3x the licensed physical capacity and when considering Deduplication higher Logical Capacity. Example, a base HPE VTC with 8TB of physical licensed capacity can realize 3x of Cloud Tiering to 24TB of physical storage. When applying typical Deduplication ratios – the same 8TB & 24TB of physical results in 72TB and 216TB respectfully.
16	Does ETI-NET certify S3 Cloud Service providers?	Yes, ETI-NET supports a list of specific S3 providers that are continually tested as part of the release process. The list can be found on ETI-NET’s website: https://etinet.com/products/backbox-dedupesoftware/S3support/ Note: ETI-NET and HPE are continually updating Cloud Tiering Provider Support – please check with ETI-NET and HPE for the latest list of supported providers.



Security for HPE NonStop CLIM, NSC and ETI-NET BackBox with QoreStor

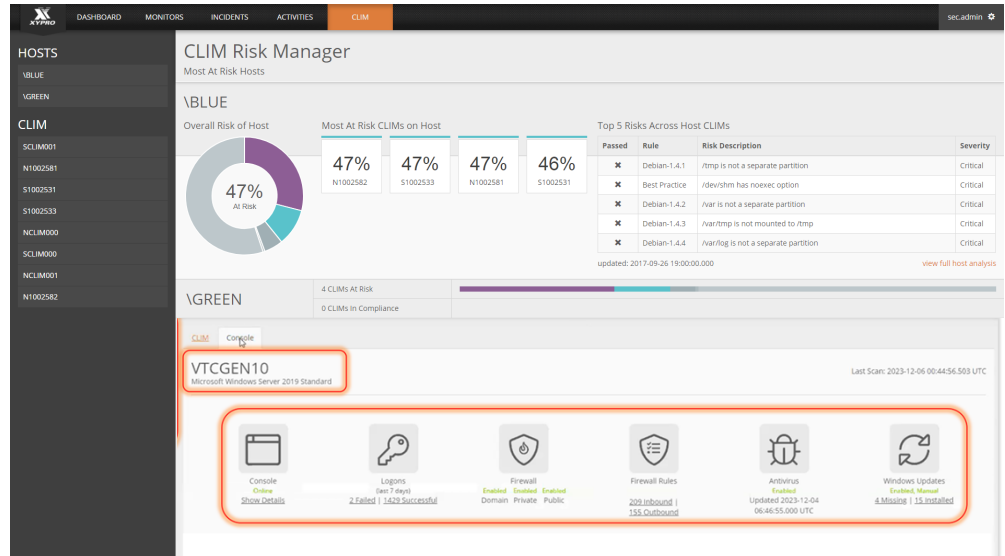
KEY BENEFITS

- Inclusion of VTC with Backup data as part of NonStop data estate
- Continuous monitoring for enhanced security posture and reduced risk
- Comprehensive security hardening based on industry best practices
- Gain the confidence to become secure and remain secure

KEY FEATURES

- Security monitoring NonStop CLIM (Linux), System Console and ETI-NET Backbox (MS Windows and QoreStor) from a single platform
- Modern browser application interface
- Automated compliance, policy management and reporting
- Actionable dashboard quickly highlight critical information
- Remediation recommendations ensure risk is addressed

IN PARTNERSHIP WITH



Overview

Nearly 40% of IT assets are unmonitored due to resource limitations, complexity of IT environments, a general lack of awareness, and not having effective tools. This oversight leaves vital components of the HPE NonStop ecosystem—such as NonStop Cluster I/O Modules (CLIM), NonStop System Consoles (NSC), and ETI-NET Backbox Servers with QoreStor —vulnerable to ransomware attacks, data breaches, and unauthorized access. Tackling these security challenges is daunting; achieving visibility into system configurations and ensuring continuous monitoring demands significant effort and specialized tools, as NonStop appliances necessitate distinct strategies for risk management and security enforcement.

XYGATE SecurityOne - Appliance Sentry Module (ASM) continuously monitors your NonStop Appliances, uncovering vulnerabilities or configuration errors. With ASM, you'll receive a detailed risk score along with corrective steps for remediation, ensuring that your appliances get secure and stay secure.

Comprehensive Security for ETI-NET Backbox, with QoreStor, CLIM and NSC

ASM performs comprehensive scans and produces detailed reports on security configurations to pinpoint potential vulnerabilities. By gathering data across a wide range of appliances within numerous NonStop systems, ASM ensures you are equipped with proactive notifications. Utilizing the patented contextualization technology of **XYGATE SecurityOne (XS1)**, ASM swiftly highlights vulnerable elements within NonStop appliances, facilitating rapid and effective response measures.

ASM delivers precise, step-by-step instructions for rectifying vulnerabilities, drawing from Center for Internet Security (CIS) benchmarks and the HPE NonStop Security Hardening Guide for accuracy and reliability. The quick and thorough scans pinpoint security configuration issues, providing actionable insights almost immediately. With its straightforward explanations and direct remediation strategies, ASM arms you with the essential information to quickly and confidently manage and mitigate security incidents.

XYGATE®

SecurityOne® Appliance Sentry Module

Security for HPE NonStop CLIM, NSC and ETI-NET Backbox with QoreStor



64% of organizations experienced an attack on an improperly configured endpoint over the past 12 months.

-Ponemon Institute

ETI-NET Backbox Support

ASM, part of the XYGATE SecurityOne Suite+ bundle delivers contextualized security insights on ETI-Net Backbox with QoreStor server configurations. Results are displayed in an actionable and user friendly interface, giving you a powerful solution for monitoring and addressing risks. ASM actively monitors various security vectors, such as

- Successful/failed logons
- Firewall status
- Network ports
- Anti-virus status
- Definition dates
- Missing Microsoft Windows updates
- Installed third party software
- and more

Integrate Enriched Data

XYGATE SecurityOne creates context-enriched NonStop data, which is effortlessly integrated with leading enterprise SIEMs such as ArcSight, IBM QRadar, Splunk, RSA NetWitness, and more. This enables NonStop systems to become an integral part of the broader enterprise security infrastructure, contributing to compliance, alerting, forensic analysis, and risk management activities.

Contextual data significantly reduces the occurrence of false positives, allowing security teams to concentrate their efforts on genuine security threats. This enriched data facilitates the creation of more relevant security alerts, queries, and reports, enhancing both the utility of the data and the effectiveness of the security measures implemented by your team.

Complete Coverage

Visibility into NonStop Appliances that contain NonStop backup data completes the security landscape for NonStop risk management. ASM integrates seamlessly, leveraging contextual data from endpoints to ensure XYGATE SecurityOne provides total protection. By conducting detailed evaluations of each CLIM, HPE BackBox with QoreStor VTCs and any other appliances within your NonStop ecosystem, you can remove any uncertainties and achieve a deep insight into potential security threats, closing the gap in your defense strategy.

Ordering Info

ASM is included with the XYGATE SecurityOne Suite+ Bundle
Product ID
BE240AC HPE XYGATE SecurityOne Suite+ for L Series
QX1BNDP HPE XYGATE SecurityOne Suite+ for J Series